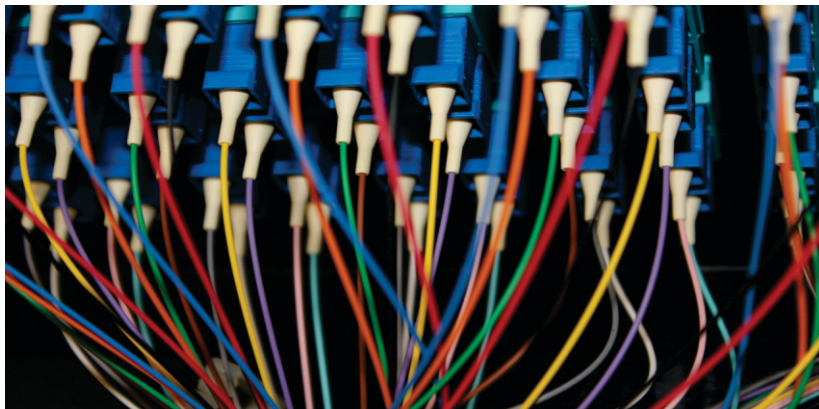




NYIIX Peering Exchange



Interconnecting with multiple transit providers gives you lower latency, enhanced performance through alternate routes and reduces traditional transport costs.

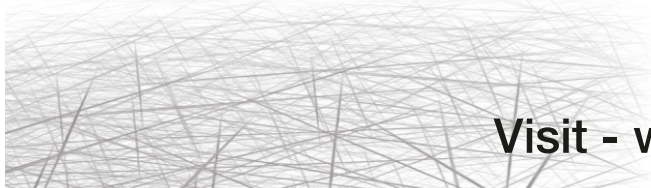
Where the World Gets Connected

Both NYIIX and LAIIX are based on Brocade carrier class and high speed platform, with both public and private peering via VLAN services. Route servers are available at both locations.



Traditional Transport Transformed

Established in 1966 by TELEHOUSE America, the New York International Internet Exchange is one of the largest neutral internet exchange points on the US East Coast and in the world.



Visit - www.NYIIX.net

Seamless switching fabrics at:

NEW YORK

85 10th Avenue

60 Hudson St

111 8th Avenue

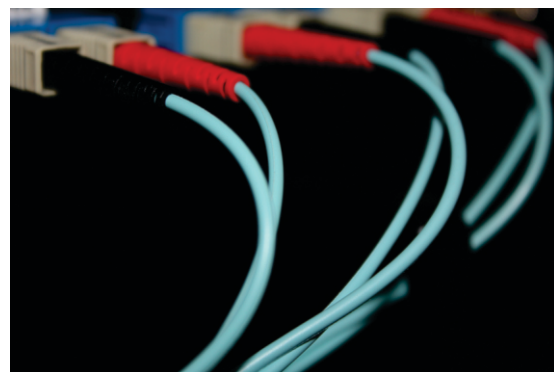
32 Avenue of the America's

7 Teleport Drive

NEW JERSEY

165 Halsey St

2 Emerson Lane



LAIIX Peering Exchange

Why TELEHOUSE Peering

- Lightning-fast, powerful network-to-network connections
- Interconnect and exchange your IP traffic at up to 10GigE speeds
- Dramatic cost savings by averaging down bandwidth fees
- Optimal traffic routing to adjacent networks
- The opportunity to connect to one of the few IX route servers in the United States
- NYIIX resale opportunity to increase your revenue or interconnect your IX to NYIIX (in development)

Advantages

- Neutral scalable infrastructure
- Ipv4 & Ipv6 Protocols
- Jumbo frame (9K bytes) support
- Wire-Speed guaranteed
- Route Server access provides highly advanced peering with multiple simultaneous network routes.

Los Angeles International Exchange (LAIIX) has seamless switching fabrics at 626 Wilshire and 1 Wilshire.



Seamless switching fabrics at:

626 Wilshire

1 Wilshire



Visit - www.LAIIX.net