

**TELEHOUSE**

HOME TO YOUR GLOBAL ICT SOLUTIONS

# Telehouse **Frankfurt.**

Location: Kleyerstrasse 79-89, 60326 Frankfurt am Main, Germany



## Telehouse Frankfurt

Strategically located only 3km from central Frankfurt, Germany's major financial and telecommunications district, the Tier 3 data center stretches over a 67,000m<sup>2</sup> site with an immediately available 25,000m<sup>2</sup> of fully-fitted colocation space. This highly secure data center provides one of the largest housing facilities in Germany with reliable environmental controlling systems and scalable power options. Connected to Europe's second largest Internet exchange, the DE-CIX with over 400 international and domestic ISPs and carriers establishes Telehouse Frankfurt as the ideal colocation facility for fast-growing multinational corporations and SME's.

Growing compliance regulations in Germany are resulting in greater storage requirements and the need for improved risk management and business continuity planning, leading to increased willingness to use third party facilities. As one of the most reputable brands, Telehouse provide state-of-the-art data centers in over 23 global markets helping companies migrate their mission-critical applications to secure well-connected facilities. The world's leading corporations, financial institutions and public cloud providers employ Telehouse as a primary or back-up site to ensure their services stay uninterrupted 24 hours a day.

### Colocation Options:

- Rack colocation - customer's equipment is installed in a 19-inch individually locked cabinet

- Cage colocation - dedicated private space up to 900 m<sup>2</sup> enclosed in cages constructed to client specifications

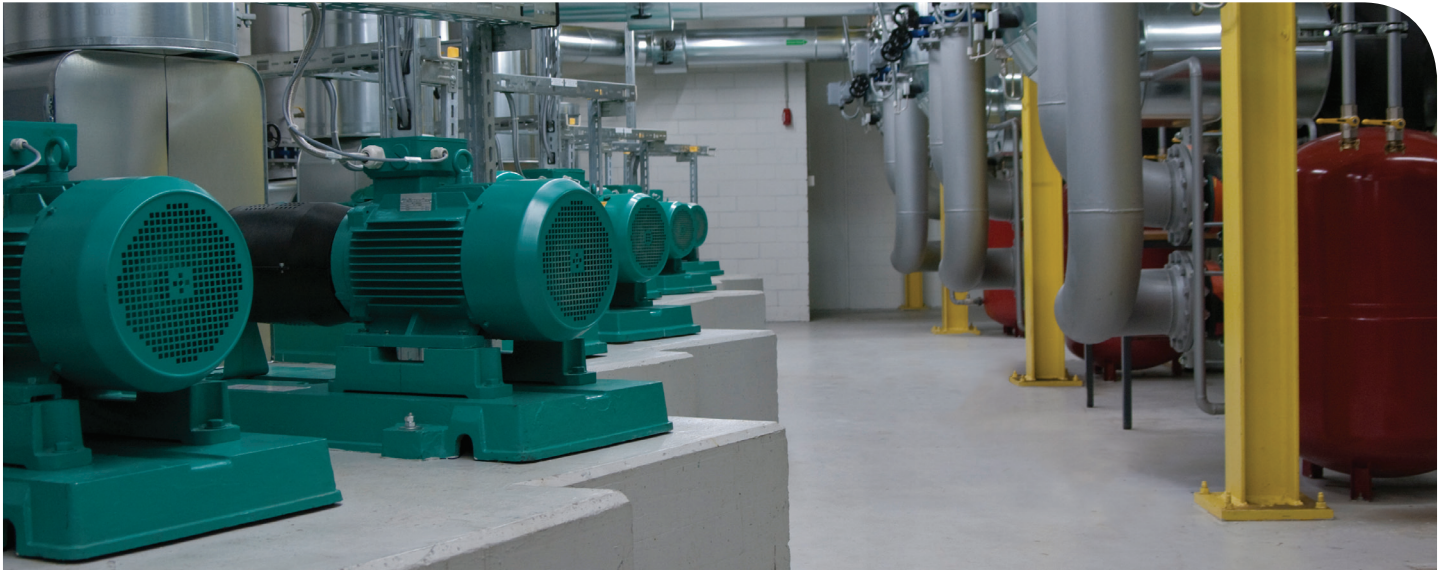
### Power:

- Power to rack up to 8kW with higher scalable options
- N+1 redundant UPS-supported supplies with battery backup
- Up to 21MVA uninterruptible emergency power
- Sub-distribution according to customer specifications with separate power supply meterings
- The data center can be kept fully operational for 3 days in the event of a power failure through diesel generators

### Environment and Air Conditioning:

- Redundant air conditioning and cooling systems at N+1
- Room temperature maintained at 24° C +/- 4°C
- Temperatures in the data centers are monitored by means of sensors
- Relative humidity at 50% to 15%
- Floor load-bearing capacity from 5 to 15 kN/ m<sup>2</sup>
- Raised floor at 300-700 mm





## Connectivity:

- A carrier-neutral facility offering customers freedom of choice for connectivity with access to multiple major local and international network operators
- Optimum connection to the German Internet Exchange Hub (DE-CIX)
- Direct connection to the Frankfurt fibre ring

## Fire Detection and Suppression:

- Visual/thermal fire alarm on two levels (ceiling and raised floor)
- Active inergen fire extinguishing systems
- Option: early fire detection (RAS system)
- Choice between rooms with active or passive fire protection

## Security Systems:

- Video surveillance of outside areas with recording over a three-month period
- Optional: video surveillance in rooms
- Facility is surrounded with a detection-equipped fence
- 24/7 manned control center on site – error messages are reported by a centralised control system
- 24/7 onsite security staff

- Strict access authorisation programme in place

- Optional: Biometric access control system

## Additional Services:

- Business Continuity Center with up to 300 workstations for backing up business operations

- 24/7 monitoring and remote hands services
- Rental of offices, storage space and staging-rooms in a variety of sizes integrated within the security of Telehouse facilities
- Planning, financing, installation, 24/7 operation in a secure and highly available environment, in-house cabling and facility management by trained staff

## Additional Specifications:

- Telehouse Frankfurt meets the Tier 3 classification with optional multi-tier allocated areas
- Available on-site areas for construction of private Tier 4 data centers
- Telehouse Frankfurt is certified to IDW PS951 (German equivalent to Statement on Auditing Standards (SAS) No. 70)

## Home to your global ICT solutions

Telehouse now offer full end-to-end ICT solutions from design to implementation such as IP connectivity, system integration, LAN and software installation, system monitoring and virtual servers as well as premium data centers.

Speak to a member of our sales team regarding your requirements and we will propose the right solution for you. Telehouse can also assist in improving the efficiency of your existing IT infrastructure and the management of a comprehensive IT migration plan.

## For more information, contact our sales team:

T: +1 718 355 2500  
E: [sales@telehouse.com](mailto:sales@telehouse.com)  
W: [www.telehouse.com](http://www.telehouse.com)

